

# HPE Aruba IOn 1930 48G 4SFP+ Switch

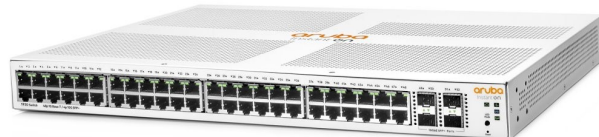
**cena vč DPH:** **10286 Kč**

cena bez DPH: 8501 Kč

**Kód zboží (ID):** 4417433

**PN:** JL685A

**Záruka:** 60 měsíců



Seven advanced smart managed Layer 2+ Gigabit switches for high-performance connectivity. Non-PoE and Class 4 PoE (i.e. PoE+) 8-, 24- and 48-port models for deployment flexibility. 1G/10G SFP+ ports on 24- and 48-port models for fiber connectivity. Aruba Instant On mobile app and/or cloud-based web portal for easy network management onsite or remotely. Option to manage your switches through local web GUI. Limited Lifetime Warranty. Product Differentiator (long)Advanced, smart-managed, fixed-configuration Gigabit switches designed for small businesses. Easy-to-deploy, secure and affordable. The first switches with Instant On “anywhere, anytime” configuration and management. Using the Instant On mobile app or the cloud-based web portal, quickly setup, monitor and manage the 1930 switch. Can also choose to manage the device through the local web GUI. This model has 48 10/100/1000 RJ-45 and 4 SFP 1/10GbE ports. Power Consumption Description36.9 W maximum, 16.8 W idle Input Voltage100 - 127 / 200 - 240 VAC External I/O Ports48 RJ-45 10/100/1000 ports, 4 SFP 1/10GbE ports Switching Capacity176 Gbps Throughput130.95 Mpps, maximum Memory and ProcessorARM Cortex-A9 @ 800 MHz 512 MB SDRAM, 256 MB flash 1.5 MB packet buffer PoE Capability370 W maximum, depending on model Management FeaturesAruba Instant On Portal, Web browser, SNMP Manager Warranty Standard StatementLimited Lifetime Warranty with 24x7 phone support for 90 days and chat support for the entire warranty duration Weight (imperial)6.91 lb Weight (metric)3.13 kg Product Dimensions (imperial)1.73 x 17.42 x 11.12 in Product Dimensions (metric)4.39 x 44.25 x 28.24 cm

Seven advanced smart managed Layer 2+ Gigabit switches for high-performance

connectivity. Non-PoE and Class 4 PoE (i.e. PoE+) 8-, 24- and 48-port models for deployment flexibility. 1G/10G SFP+ ports on 24- and 48-port models for fiber connectivity. Aruba Instant On mobile app and/or cloud-based web portal for easy network management onsite or remotely. Option to manage your switches through local web GUI. Limited Lifetime Warranty. Product Differentiator (long)Advanced, smart-managed, fixed-configuration Gigabit switches designed for small businesses. Easy-to-deploy, secure and affordable. The first switches with Instant On “anywhere, anytime” configuration and management. Using the Instant On mobile app or the cloud-based web portal, quickly setup, monitor and manage the 1930 switch. Can also choose to manage the device through the local web GUI. This model has 48 10/100/1000 RJ-45 and 4 SFP 1/10GbE ports. Power Consumption Description36.9 W maximum, 16.8 W idle Input Voltage100 - 127 / 200 - 240 VAC External I/O Ports48 RJ-45 10/100/1000 ports, 4 SFP 1/10GbE ports Switching Capacity176 Gbps Throughput130.95 Mpps, maximum Memory and ProcessorARM Cortex-A9 @ 800 MHz 512 MB SDRAM, 256 MB flash 1.5 MB packet buffer PoE Capability370 W maximum, depending on model Management FeaturesAruba Instant On Portal, Web browser, SNMP Manager Warranty Standard StatementLimited Lifetime Warranty with 24x7 phone support for 90 days and chat support for the entire warranty duration Weight (imperial)6.91 lb Weight (metric)3.13 kg Product Dimensions (imperial)1.73 x 17.42 x 11.12 in Product Dimensions (metric)4.39 x 44.25 x 28.24 cm